

CIS 371
~~Digital Systems Organization and Design~~
Computer

Unit 0: Introduction

Slides developed by Milo Martin & Amir Roth at the University of Pennsylvania with sources that included University of Wisconsin slides by Mark Hill, Guri Sohi, Jim Smith, and David Wood.

Today's Agenda

- Course overview and administrivia
- Motivational experiments
- What is computer architecture anyway?
 - ...and the forces that drive it

Warmup Exercise

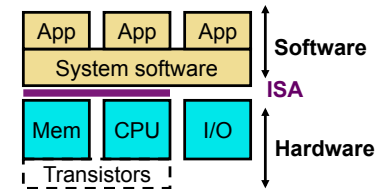
- ```
while (node != NULL) {
 if (node->m_data == value) {
 return node;
 } else if (node->m_data < value){
 node = node->m_right;
 } else {
 node = node->m_left;
 }
}
```
- Consider a binary tree
    - Left & right pointers
    - Integer value keys
    - Initialized to be fully balanced
  - Question #1:
    - The average lookup time for tree of size 1024 ( $1K = 2^{10}$ ) is 50ns
    - What about for a tree of size 1,048,576 ( $1M = 2^{20}$ )?
  - Question #2:
    - For each item in a tree, look it up (repeatedly)
    - What is the expected distribution of lookup times over all items
      - For a tree with height  $h$
      - That is, what does the histogram of lookup times look like?

## Overview & Administrivia

## Pervasive Idea: Abstraction and Layering

- **Abstraction**: only way of dealing with complex systems
  - Divide world into objects, each with an...
    - **Interface**: knobs, behaviors, knobs → behaviors
    - **Implementation**: "black box" (ignorance+apathy)
  - Only specialists deal with implementation, rest of us with interface
  - Example: car, only mechanics know how implementation works
- **Layering**: abstraction discipline makes life even simpler
  - Divide objects in system into layers, layer  $n$  objects...
    - Implemented using interfaces of layer  $n - 1$
    - Don't need to know interfaces of layer  $n - 2$  (sometimes helps)
- **Inertia**: a dark side of layering
  - Layer interfaces become entrenched over time ("standards")
    - Very difficult to change even if benefit is clear (example: Digital TV)
- **Opacity**: hard to reason about performance across layers

## Abstraction, Layering, and Computers

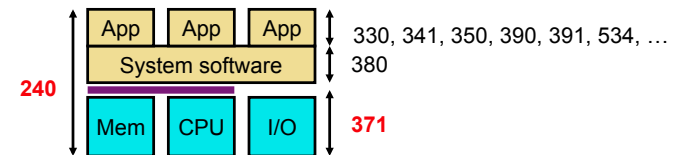


- Computers are complex, built in layers
  - Several **software** layers: assembler, compiler, OS, applications
  - **Instruction set architecture (ISA)**
  - Several **hardware** layers: transistors, gates, CPU/Memory/IO
- 99% of users don't know hardware layers implementation
- 90% of users don't know implementation of any layer
  - That's okay, world still works just fine
  - But sometimes it is helpful to understand what's "under the hood"

## CIS 240: Abstraction and Layering

- Build computer bottom up by raising level of abstraction
- Solid-state semi-conductor materials → transistors
- Transistors → gates
- Gates → digital logic elements: latches, muxes, adders
  - Key insight: number representation
- Logic elements → datapath + control = processor
  - Key insight: stored program (instructions just another form of data)
  - Another one: few insns can be combined to do anything (software)
- Assembly language → high-level language
- Code → graphical user interface

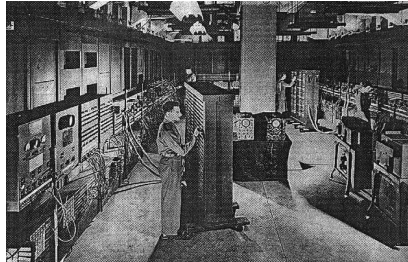
## Beyond CIS 240



- CIS 240: Introduction to Computer Systems
  - Bottom-up overview of the entire hardware/software stack
  - Follow on courses look at individual pieces in more detail
- CIS 380: Operating Systems
  - A closer look at system level software
- CIS 277, 330, 341, 350, 390, 391, 455, 460, 461, 462...
  - A closer look at different important application domains
- **CIS 371: Computer Organization and Design**
  - **A closer look at hardware layers**

## Why Study Hardware?

- It's required (translation: "it's good for you", we think)
- Real world impact
  - Without computer architecture there would be no computers
- Penn legacy
  - First "computer" (ENIAC) was built here
  - "computer" = general-purpose stored-program computer
- Get a hardware job
  - Intel, AMD/ATI, IBM, Sun/Oracle, NVIDIA, ARM, HP, TI, Samsung, Microsoft...
- Be better at a software job
  - Apple, Google, Microsoft, etc.
- Go to grad school



CIS 371 (Martin): Introduction

9

## Hardware Aspect of CIS 240 vs. CIS 371

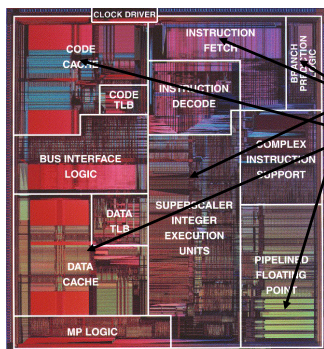
- Hardware aspect of CIS 240
  - Focus on one toy ISA: LC4
  - Focus on functionality: "just get something that works"
  - Instructive, learn to crawl before you can walk
  - Not representative of real machines: 240 hardware is circa 1975
- CIS 371
  - De-focus from any particular ISA
  - Focus on quantitative aspects: **performance**, cost, power, etc.

CIS 371 (Martin): Introduction

10

## CIS 371 Topics

- Review of CIS 240 level hardware
  - Instruction set architecture
  - Single-cycle datapath and control
- New
  - Performance, cost, and technology
  - Fast arithmetic
  - Pipelining and superscalar execution
  - Memory hierarchy and virtual memory
  - Multicore
  - Power & energy



CIS 371 (Martin): Introduction

11

## Course Goals

- Three primary goals
  - Understand key hardware concepts
    - Pipelining, parallelism, caching, locality, abstraction, etc.
  - Hands-on design lab
  - A bit of scientific/experimental exposure and/or analysis
    - Not found too many other places in the major
- My role:
  - Trick you into learning something

CIS 371 (Martin): Introduction

12

## CIS371 Administrivia

---

- Instructor
  - **Prof. Milo Martin** (milom@cis), Levine 606
- "Lecture" TAs
  - **Christian DeLozier & Abhishek Udupa**
- "Lab" TAs
  - TBD
- Contact e-mail:
  - **cis371@cis.upenn.edu** (goes to me and lecture TAs)
- Lectures
  - **Please do not be disruptive (I'm easily distracted as it is)**
- Information on assignments, labs, exams, grading
  - Forthcoming

## The CIS371 Lab

---

- Lab project
  - "Build your own processor" (pipelined 16-bit CPU for LC4)
  - Use Verilog HDL (hardware description language)
    - Programming language compiles to gates/wires not insns
  - Implement and test on FPGA (field-programmable gate array)
  - + Instructive: learn by doing
  - + Satisfying: "look, I built my own processor"
- No scheduled lab sessions
  - But you'll need to use the hardware in the lab for the projects

## Lab Logistics

---

- K-Lab: Moore 204
  - Home of the boards, computers, and later in semester ... you
  - Good news/bad news: 24 hour access, keycode for door lock
  - "Lab" TA Office hours, project demos here, too
- Tools
  - Digilent XUP-V2P boards
  - Xilinx ISE
  - Warning: all such tools notorious for being buggy and fragile
- Logistics
  - All projects must run on the boards in the lab
  - Boards and lockers handout ... sometime in next few weeks

## CIS371 Resources

---

- Three different web sites
  - Course website: syllabus, schedule, lecture notes, assignments
    - <http://www.cis.upenn.edu/~cis371/>
  - "Piazza": announcements, questions & discussion
    - <http://www.piazza.com/upenn/spring2012/cis371>
    - **The way to ask questions/clarifications**
    - **Can post to just me & TAs or anonymous to class**
    - As a general rule, no need to email me directly
    - **Please sign up!**
  - "Blackboard": grade book, turning in some assignments
    - <https://courseweb.library.upenn.edu/>
- Textbook
  - *P+H*, "Computer Organization and Design", **4th edition?** (~\$80)
  - **New this year: available online from Penn library!**
    - <https://proxy.library.upenn.edu/login?url=http://site.ebrary.com/lib/upenn/Top?id=10509203>
  - Course will largely be lecture note driven

## Coursework (1 of 2)

---

- A few homework assignments – **individual work**
  - Written questions, occasional short programming
  - Due at beginning of class
  - 2 total “grace” periods, hand in late, no questions asked
    - One period is to next class (Tue -> Thr, Thr -> Tue)
  - Max of one late period per assignment
    - **Why?** solutions posted after next class
- 4 labs – **all done in groups of 3**
  - Lab 0: getting started, tools intro
  - Lab 1: arithmetic unit & register file
  - Lab 2: single-cycle LC4
  - Lab 3: pipelined LC4: bypassing, branch prediction, superscalar

## Coursework (2 of 2)

---

- Exams
  - In-class midterm (TBD)
  - Cumulative final exam (time & date set by registrar)
- Attend two research seminars
  - Of four or five at 3pm on Tue/Thur throughout semester
    - Or watch the recorded video online
  - Turn in short writeup
- Class participation

## Grading

---

- Tentative grade contributions:
  - Homework assignments: 15%
  - Labs: 30%
  - Research seminars:  $2\% \times 2 = 4\%$
  - Class participation: 1%
  - Exams: 50%
    - Midterm: 17%
    - Final: 33%
- Historical grade distribution
  - Median grade: B+
  - 2011: A's: 40%, B's: 50%, C's: 7%, D/F's: 3%
  - 2009: A's: 40%, B's: 40%, C's: 15%, D/F's: 5%

## Academic Misconduct

---

- Cheating will **not** be tolerated
- General rule:
  - Anything with your name on it must be **YOUR OWN** work
  - Example: individual work on homework assignments
- Possible penalties
  - Zero on assignment (minimum)
  - Fail course
  - Note on permanent record
  - Suspension
  - Expulsion
- Penn's Code of Conduct
  - <http://www.vpul.upenn.edu/osl/acadint.html>

## Full Disclosure

---

- Potential sources of bias or conflict of interest
- Most of my funding governmental (your tax \$\$\$ at work)
  - National Science Foundation (NSF)
  - DARPA & ONR
- My non-governmental sources of research funding
  - **NVIDIA** (sub-contract of large DARPA project)
  - **Intel**
  - **Sun/Oracle** (hardware donation)
- Collaborators and colleagues
  - Intel, IBM, AMD, Oracle, Microsoft, Google, VMWare, ARM, etc.
  - (Just about every major computer hardware company)

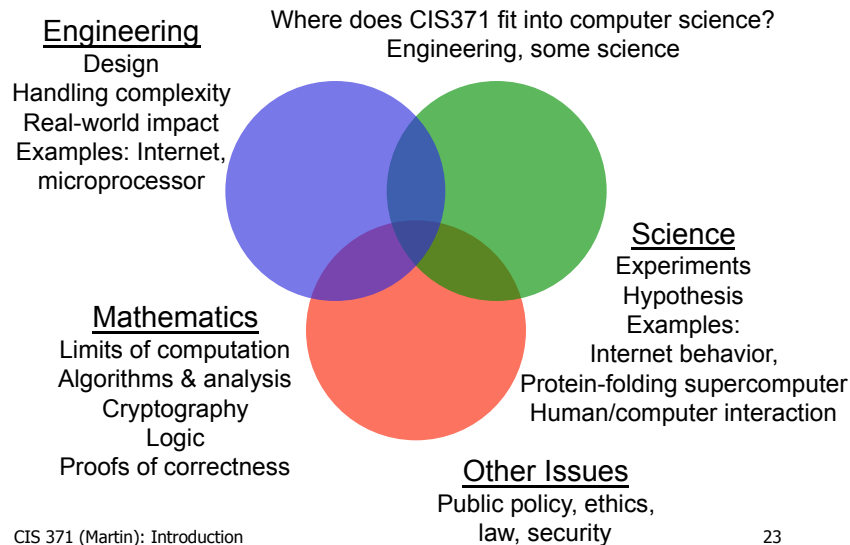
## Recap: CIS 371 in Context

---

- Prerequisite: CIS 240
  - **Absolutely required as prerequisite**
  - Focused on "**function**"
  - Exposure to logic gates and assembly language programming
- The "lecture" component of the course:
  - Mostly focuses on "**performance**"
  - Some coverage of "**experimental evaluation**"
- The "lab" component of the course:
  - Focuses on "**design**"
  - Design a working processor

## Computer Science as an Estuary

---

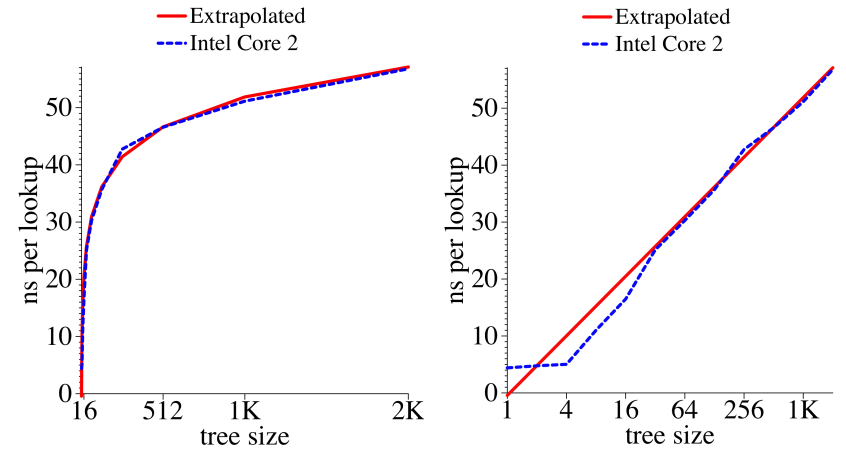


## Experimental Motivation

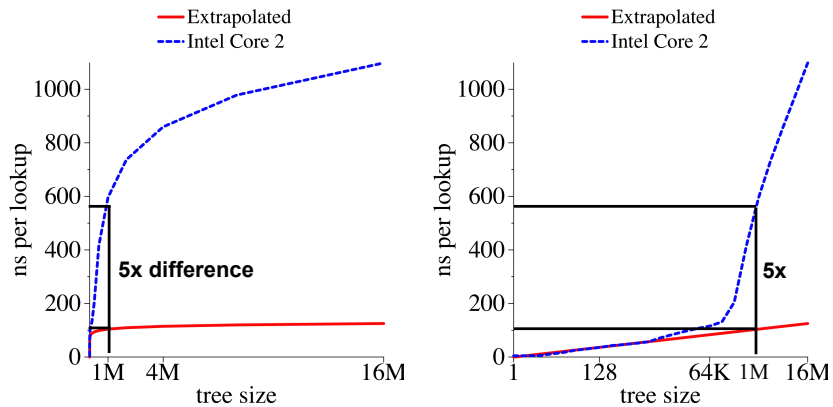
## Limits of Abstraction: Question #1

- Question#1:
  - The average lookup time for tree of size 1024 (1K) is 50ns
  - What is the expected lookup time for a tree of size 1048576 (1M)?
- Analysis (from what you know from 121, 240, 320):
  - 1024 is  $2^{10}$ , 1048576 is  $2^{20}$
  - Binary search is  $O(\log n)$
  - Based on that, it will take roughly twice as long to lookup in a  $2^{20}$  tree than a  $2^{10}$  tree
  - Expected time: 100ns
- Let's evaluate this **experimentally**
  - Experiment: create a balanced tree of size  $n$ , lookup a random node 100 million times, find the average lookup time, repeat

## Average Time per Lookup

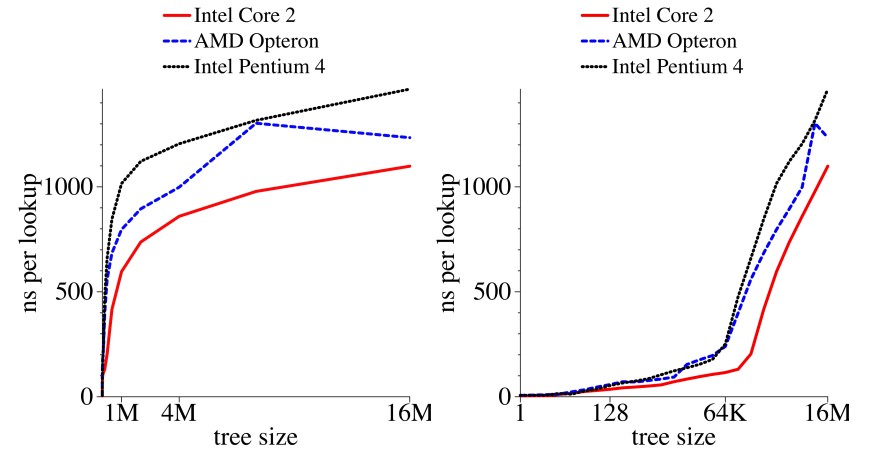


## Average Time per Lookup

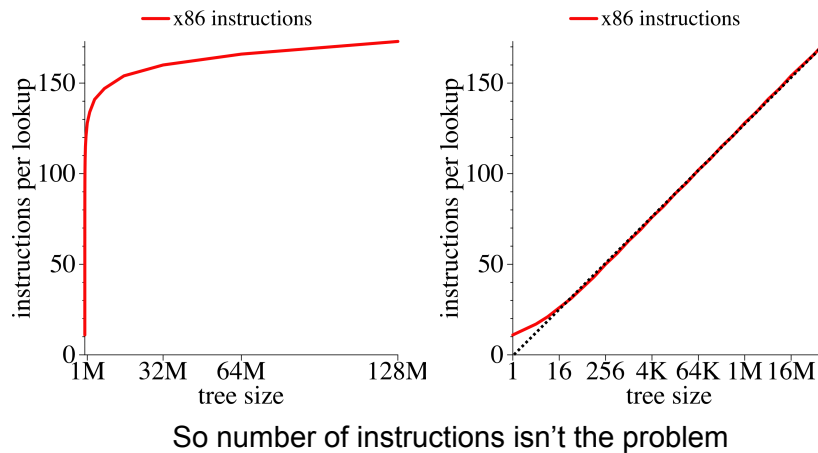


What is going on here?

## Average Time per Lookup



## Average Instructions per Lookup

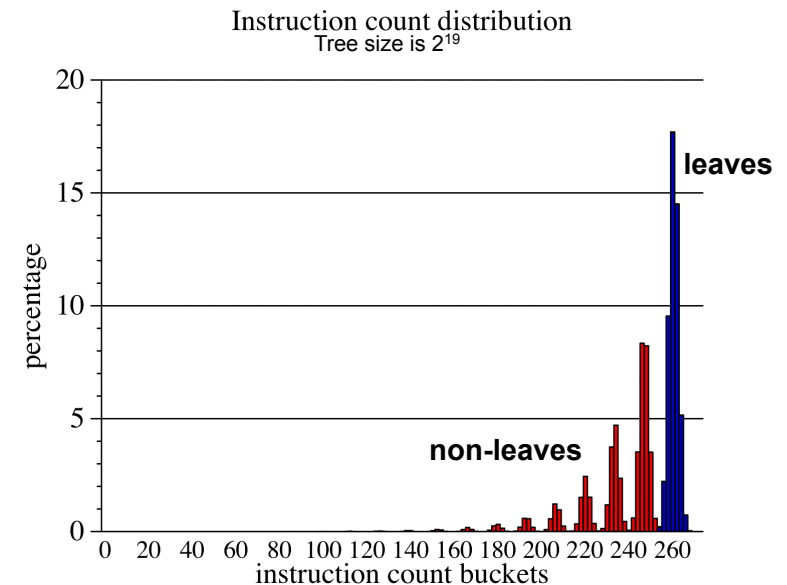


## Question #1 Discussion

- Analytical answer assuming  $O(\log n)$ 
  - $2^{10}$  to  $2^{20}$  will have 2x slowdown
- Experimental result
  - $2^{10}$  to  $2^{20}$  has a 10x slowdown
- 5x gap in expected from experimental!
- What is going on?
  - Modern processor have "fast" and "slow" memories
    - Fast memory is called a "cache"
  - As tree gets bigger, it doesn't fit in fast memory anymore
  - Result: average memory access latency becomes slower

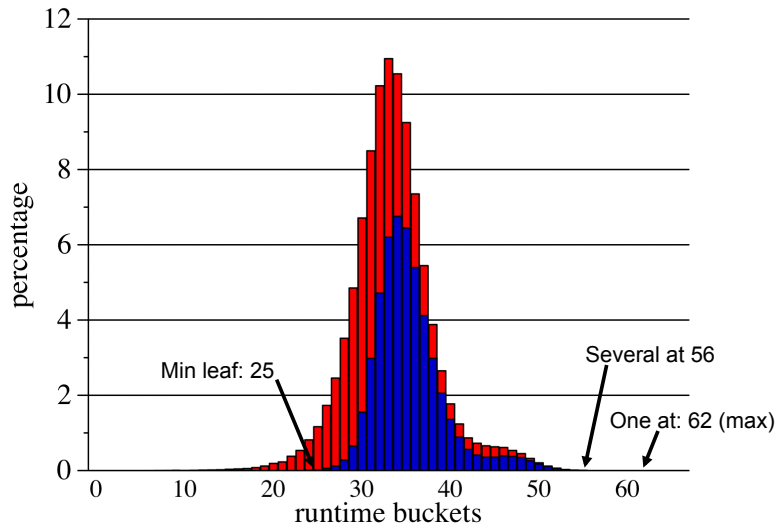
## Limits of Abstraction: Question #2

- Question #2:
  - What is the expected distribution of lookup times?
  - That is, for a tree with height  $h$ , what is the histogram of repeatedly looking up a random value in the tree?
- Analysis:
  - 50% of nodes are at level  $n$  (leaves), slowest
  - 25% of nodes are at level  $n-1$ , a bit faster
  - 12.5% of nodes are at level  $n-2$ , a bit faster yet
  - 6.25%, 3%, 1.5%...
- Let's evaluate this experimentally
  - Experiment: create a balanced tree of size  $2^{19}$ , for each node, lookup it up 100 million times (consecutively), calculate lookup time for each node, create a histogram



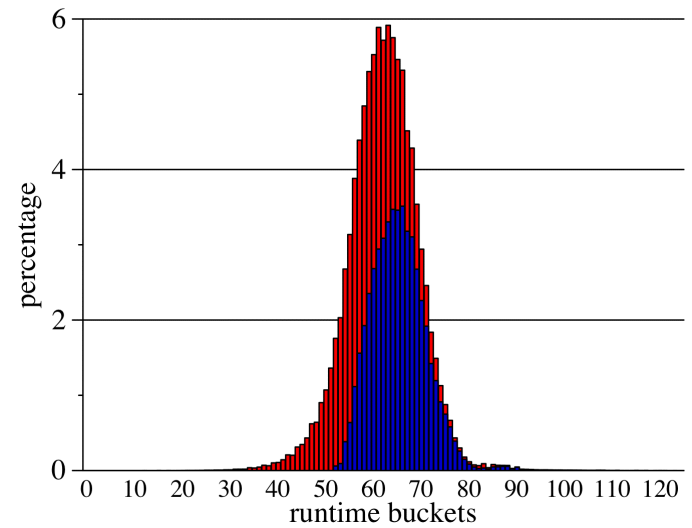


Runtime distribution - Intel Core2  
Tree size is  $2^{19}$

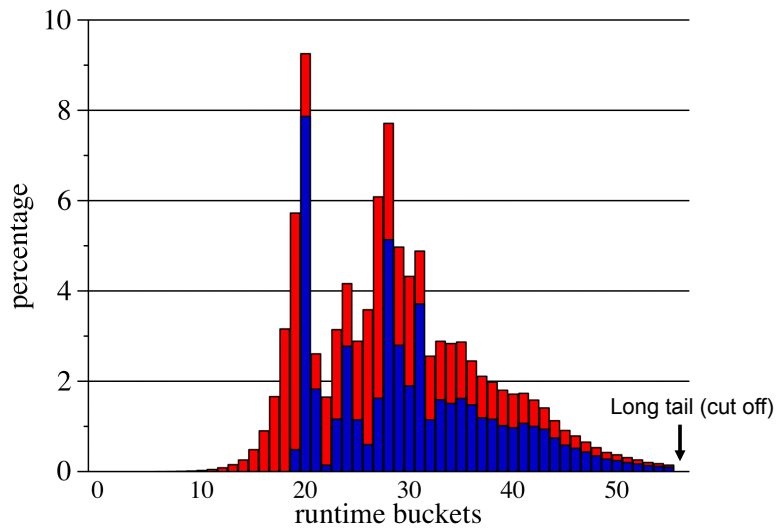


What is going on here?

Runtime distribution - AMD Opteron  
Tree size is  $2^{19}$



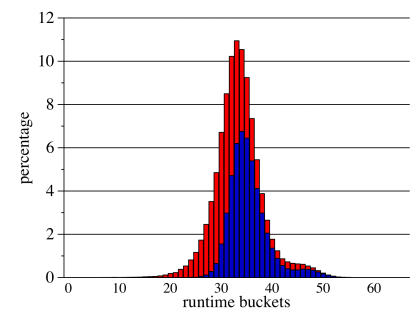
Runtime distribution - Intel Pentium4  
Tree size is  $2^{19}$



## Fastest and Slowest Leaf Nodes (Core2)

- Expectation:
  - Let's just consider the leaves
  - Same depth, similar instruction count -> similar runtime
- Some of the fastest leaves (all ~24): L = Left, R = Right
  - LLLLLLLLLLLLLLLLLLLLLL
  - LLLLLLLLLLLLLLLLLLLR (or any with one "R")
  - LLRLLLLLLLLLLLLLLLLLL
  - LLRLLRLLLLLLLLLLLLLL
  - LLRRLLRLLLLLLLLLLLLLL
- RRRRRRRRRRRRRRRRRRRR
  - was worst than average (~41)
- Some of the slowest leaves:
  - RRRLLRRRLLRLLRLLLL (~62)
  - RRRLLRRRLLRLLRLL (~56)
  - RRRLLRRRLLRLLRLL (~56)

Runtime distribution - Intel Core2



## Question #2 Discussion

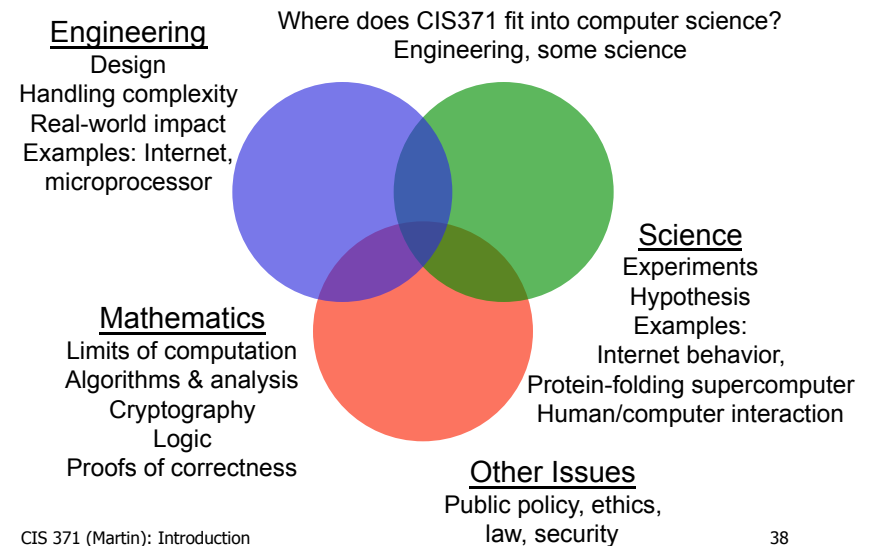
---

- Analytical expectation
  - 50%, 25%, 12.5%, 6.25%, 3%, 1.5%...
  - All leaf nodes with similar runtime
- Experimental result
  - Significant variation, position in tree matters
  - All "left" is fastest, all "right" is slow, but not the slowest
  - Pattern of left/right seems to matter significantly
- What is going on?
  - "Taken" branches are slower than "non-taken" branches
  - Modern processors learn and *predict* branch directions over time
    - Can detect simple patterns, but not complicated ones
  - Result: exact branching behavior matters

## What is Computer Architecture?

## Computer Science as an Estuary

---



## "Computer Organization"

---

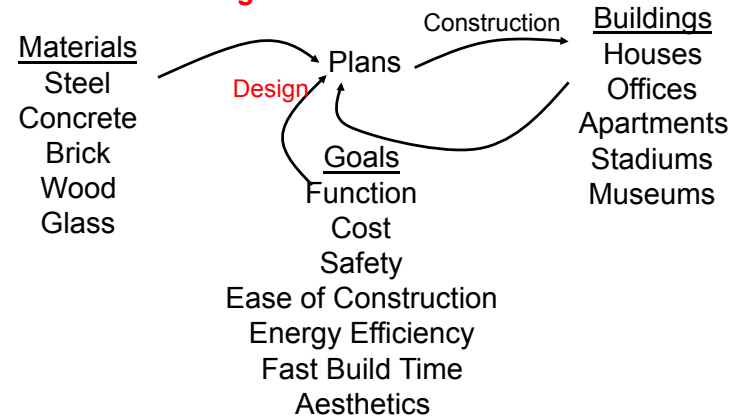
- "Digital Systems Organization and Design"
  - Don't really care about "digital systems" in general
  - **"Computer Organization and Design"**
- **Computer architecture**
  - Definition of ISA to facilitate implementation of software layers
  - The hardware/software interface
- **Computer micro-architecture**
  - Design processor, memory, I/O to implement ISA
  - Efficiently implementing the interface
- CIS 371 is mostly about processor micro-architecture
  - Confusing: architecture also means micro-architecture

## What is Computer Architecture?

- “*Computer Architecture* is the science and art of selecting and interconnecting hardware components to create computers that meet functional, performance and cost goals.” - WWW Computer Architecture Page
- An analogy to architecture of buildings...

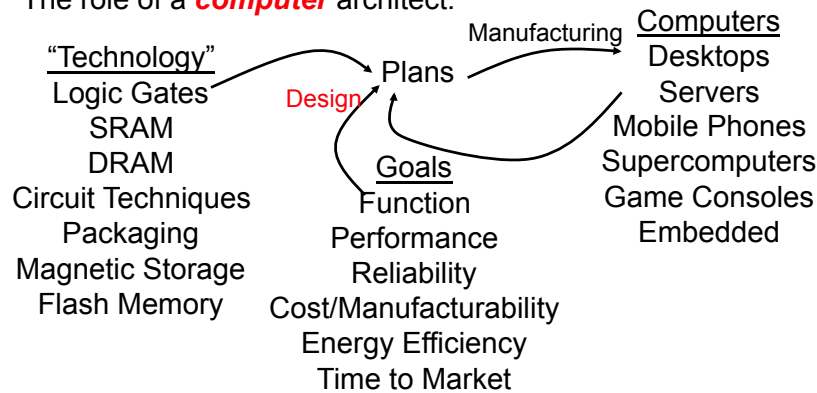
## What is ~~Computer~~ Architecture?

The role of a **building** architect:



## What is Computer Architecture?

The role of a **computer** architect:



**Important differences:** age (~60 years vs thousands), rate of change, automated mass production (magnifies design)

## Computer Architecture Is Different...

- Age of discipline
  - 60 years (vs. five thousand years)
- Rate of change
  - All three factors (technology, applications, goals) are changing
  - Quickly
- Automated mass production
  - Design advances magnified over millions of chips
- Boot-strapping effect
  - Better computers help design next generation

## Design Constraints

---

- **Functional**
  - Needs to be correct
    - And unlike software, difficult to update once deployed
  - What functions should it support (Turing completeness aside)
- **Reliable**
  - Does it *continue* to perform correctly?
  - Hard fault vs transient fault
  - Google story - memory errors and sun spots
  - Space satellites vs desktop vs server reliability
- **High performance**
  - "Fast" is only meaningful in the context of a set of important tasks
  - Not just "Gigahertz" – truck vs sports car analogy
  - Impossible goal: fastest possible design for all programs

## Design Goals

---

- **Low cost**
  - Per unit manufacturing cost (wafer cost)
  - Cost of making first chip after design (mask cost)
  - Design cost (huge design teams, why? Two reasons...)
  - (Dime/dollar joke)
- **Low power/energy**
  - Energy in (battery life, cost of electricity)
  - Energy out (cooling and related costs)
  - Cyclic problem, very much a problem today
- **Challenge: balancing the relative importance of these goals**
  - And the balance is constantly changing
    - No goal is absolutely important at expense of all others
  - Our focus: *performance*, only touch on cost, power, reliability

## Shaping Force: Applications/Domains

---

- Another shaping force: **applications** (usage and context)
  - Applications and application domains have different requirements
    - Domain: group with similar character
  - Lead to different designs
- **Scientific**: weather prediction, genome sequencing
  - First computing application domain: naval ballistics firing tables
  - Need: large memory, heavy-duty floating point
  - Examples: CRAY T3E, IBM BlueGene
- **Commercial**: database/web serving, e-commerce, Google
  - Need: data movement, high memory + I/O bandwidth
  - Examples: Sun Enterprise Server, AMD Opteron, Intel Xeon

## More Recent Applications/Domains

---

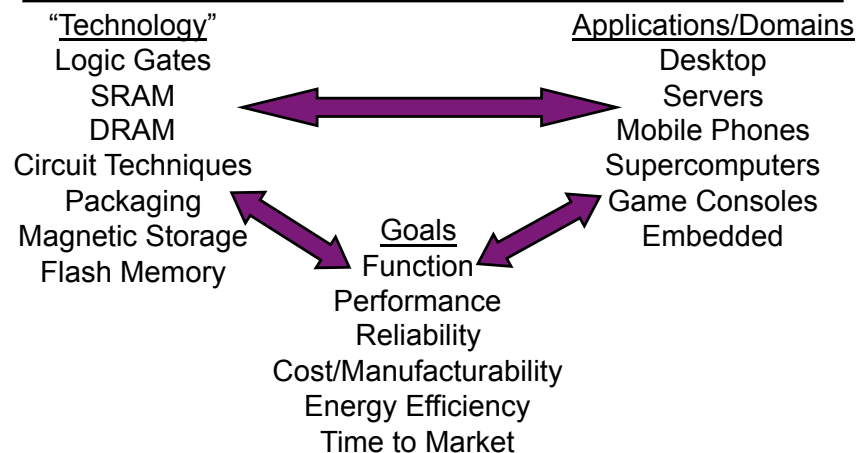
- **Desktop**: home office, multimedia, games
  - Need: integer, memory bandwidth, integrated graphics/network?
  - Examples: Intel Core 2, Core i7, AMD Athlon
- **Mobile**: laptops, mobile phones
  - Need: **low power**, integer performance, integrated wireless
  - Laptops: Intel Core 2 Mobile, Atom, AMD Turion
  - Smaller devices: ARM chips by Samsung and others, Intel Atom
- **Embedded**: microcontrollers in automobiles, door knobs
  - Need: low power, **low cost**
  - Examples: ARM chips, dedicated digital signal processors (DSPs)
  - Over 1 billion ARM cores sold in 2006 (at least one per phone)
- **Deeply Embedded**: disposable "smart dust" sensors
  - Need: extremely low power, extremely low cost

## Application Specific Designs

- This class is about **general-purpose CPUs**
  - Processor that can do anything, run a full OS, etc.
  - E.g., Intel Core i7, AMD Athlon, IBM Power, ARM, Intel Itanium
- In contrast to **application-specific chips**
  - Or **ASICs** (Application specific integrated circuits)
    - Also application-domain specific processors
  - Implement critical domain-specific functionality in hardware
    - Examples: video encoding, 3D graphics
  - General rules
    - Hardware is less flexible than software
    - + Hardware more effective (speed, power, cost) than software
    - + Domain specific more "parallel" than general purpose
      - But general mainstream processors becoming more parallel
- Trend: from specific to general (for a specific domain)

## Technology Trends

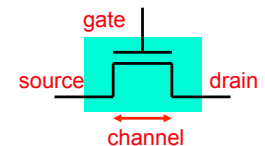
## Constant Change: Technology



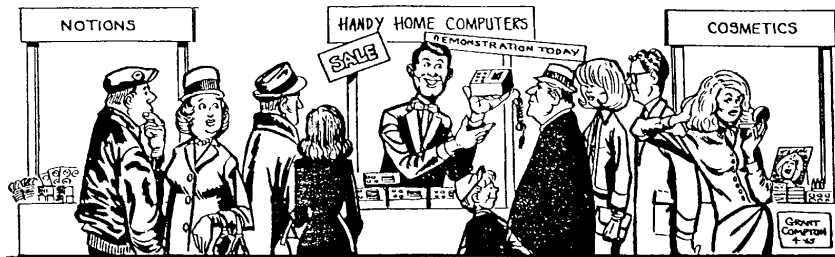
- Absolute improvement, **different rates of change**
- New application domains enabled by technology advances

## "Technology"

- Basic element
  - Solid-state **transistor** (i.e., electrical switch)
  - Building block of **integrated circuits (ICs)**
- What's so great about ICs? Everything
  - + High performance, high reliability, low cost, low power
  - + Lever of mass production



- Several kinds of integrated circuit families
  - **SRAM/logic**: optimized for speed (used for processors)
  - **DRAM**: optimized for density, cost, power (used for memory)
  - **Flash**: optimized for density, cost (used for storage)
  - Increasing opportunities for integrating multiple technologies
- Non-transistor storage and inter-connection technologies
  - Disk, optical storage, ethernet, fiber optics, wireless

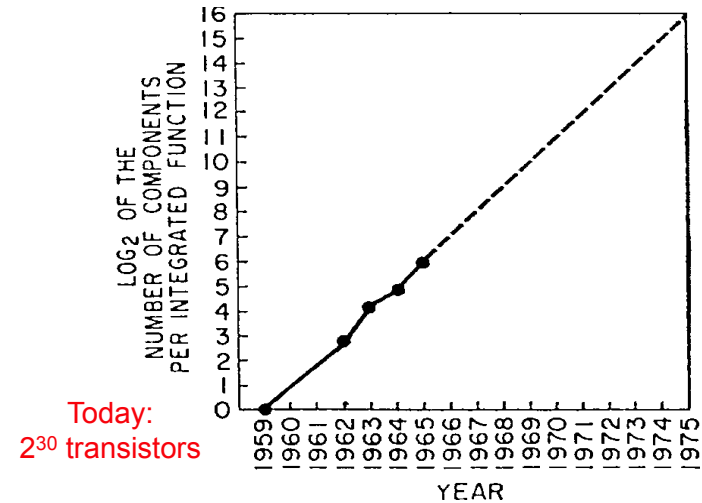


Funny or Not Funny?

## Technology Trends

- **Moore's Law**
  - Continued (up until now, at least) transistor miniaturization
- Some technology-based ramifications
  - Absolute improvements in density, speed, power, costs
  - SRAM/logic: density: ~30% (annual), speed: ~20%
  - DRAM: density: ~60%, speed: ~4%
  - Disk: density: ~60%, speed: ~10% (non-transistor)
  - Big improvements in flash memory and network bandwidth, too
- **Changing quickly and with respect to each other!!**
  - Example: density increases faster than speed
  - Trade-offs are constantly changing
  - **Re-evaluate/re-design for each technology generation**

## Moore's Law - 1965



## Technology Change Drives Everything

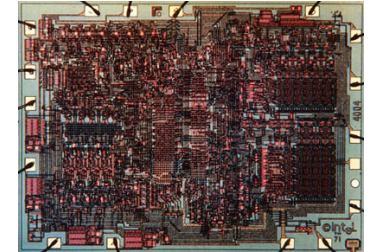
- Computers get 10x faster, smaller, cheaper every 5-6 years!
  - A 10x quantitative change is qualitative change
  - Plane is 10x faster than car, and fundamentally different travel mode
- New applications become self-sustaining market segments
  - Recent examples: mobile phones, digital cameras, mp3 players, etc.
- Low-level improvements appear as discrete high-level jumps
  - Capabilities cross thresholds, enabling new applications and uses

## Revolution I: The Microprocessor

- **Microprocessor revolution**
  - One significant technology threshold was crossed in 1970s
  - Enough transistors (~25K) to put a 16-bit processor on one chip
  - Huge performance advantages: fewer slow chip-crossings
  - Even bigger cost advantages: one "stamped-out" component
- Microprocessors have allowed new market segments
  - Desktops, CD/DVD players, laptops, game consoles, set-top boxes, mobile phones, digital camera, mp3 players, GPS, automotive
- And replaced incumbents in existing segments
  - Microprocessor-based system replaced supercomputers, "mainframes", "minicomputers", etc.

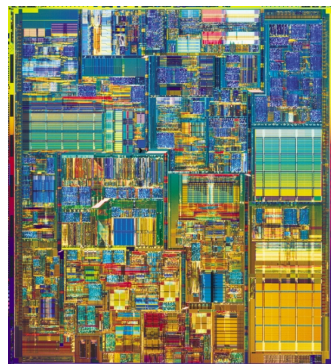
## First Microprocessor

- Intel 4004 (1971)
  - Application: calculators
  - Technology: 10000 nm
  - 2300 transistors
  - 13 mm<sup>2</sup>
  - 108 KHz
  - 12 Volts
  - 4-bit data
  - Single-cycle datapath



## Pinnacle of Single-Core Microprocessors

- Intel Pentium4 (2003)
  - Application: desktop/server
  - Technology: 90nm (1/100x)
  - 55M transistors (20,000x)
  - 101 mm<sup>2</sup> (10x)
  - 3.4 GHz (10,000x)
  - 1.2 Volts (1/10x)
  - 32/64-bit data (16x)
  - 22-stage pipelined datapath
  - 3 instructions per cycle (superscalar)
  - Two levels of on-chip cache
  - data-parallel vector (SIMD) instructions, hyperthreading



## Tracing the Microprocessor Revolution

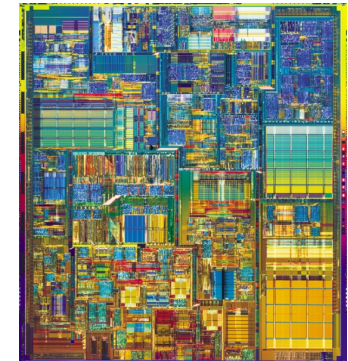
- How were growing transistor counts used?
  - Initially to widen the datapath
    - 4004: 4 bits → Pentium4: 64 bits
  - ... and also to add more powerful instructions
    - To amortize overhead of fetch and decode
    - To simplify programming (which was done by hand then)

## Revolution II: Implicit Parallelism

- Then to **extract implicit instruction-level parallelism**
  - Hardware provides parallel resources, figures out how to use them
  - Software is oblivious
- Initially using pipelining ...
  - Which also enabled increased clock frequency
- ... caches ...
  - Which became necessary as processor clock frequency increased
- ... and integrated floating-point
- Then deeper pipelines and branch speculation
- Then multiple instructions per cycle (superscalar)
- Then dynamic scheduling (out-of-order execution)
- We will talk about these things

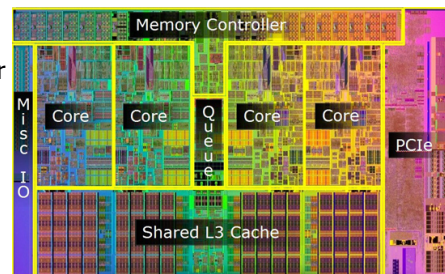
## Pinnacle of Single-Core Microprocessors

- Intel Pentium4 (2003)
  - Application: desktop/server
  - Technology: 90nm (1/100x)
  - 55M transistors (20,000x)
  - 101 mm<sup>2</sup> (10x)
  - 3.4 GHz (10,000x)
  - 1.2 Volts (1/10x)
  - 32/64-bit data (16x)
  - 22-stage pipelined datapath
  - 3 instructions per cycle (superscalar)
  - Two levels of on-chip cache
  - data-parallel vector (SIMD) instructions, hyperthreading



## Modern Multicore Processor

- Intel Core i7 (2009)
  - Application: desktop/server
  - Technology: 45nm (1/2x)
  - 774M transistors (12x)
  - 296 mm<sup>2</sup> (3x)
  - 3.2 GHz to 3.6 Ghz (~1x)
  - 0.7 to 1.4 Volts (~1x)
  - 128-bit data (2x)
  - 14-stage pipelined datapath (0.5x)
  - 4 instructions per cycle (~1x)
  - Three levels of on-chip cache
  - data-parallel vector (SIMD) instructions, hyperthreading
  - **Four-core multicore** (4x)



## Revolution III: Explicit Parallelism

- Then to support **explicit data & thread level parallelism**
  - Hardware provides parallel resources, software specifies usage
  - Why? diminishing returns on instruction-level-parallelism
- First using (subword) vector instructions..., Intel's SSE
  - One instruction does four parallel multiplies
- ... and general support for multi-threaded programs
  - Coherent caches, hardware synchronization primitives
- Then using support for multiple concurrent threads on chip
  - First with single-core multi-threading, now with multi-core
- Graphics processing units (GPUs) are highly parallel
  - Converging with general-purpose processors (CPUs)?



## To ponder...

---

Is this decade's  
"multicore revolution"  
comparable to the original  
"microprocessor revolution"?

## Technology Disruptions

---

- Classic examples:
  - The transistor
  - Microprocessor
- More recent examples:
  - Multicore processors
  - Flash-based solid-state storage
- Near-term potentially disruptive technologies:
  - Phase-change memory (non-volatile memory)
  - Chip stacking (also called 3D die stacking)
- Disruptive "end-of-scaling"
  - "If something can't go on forever, it must stop eventually"
  - Can we continue to shrink transistors for ever?
  - Even if more transistors, not getting as energy efficient as fast

## Managing This Mess

---

- Architect must consider all factors
  - Goals/constraints, applications, implementation technology
- Questions
  - How to deal with all of these inputs?
  - How to manage changes?
- Answers
  - Accrued institutional knowledge (stand on each other's shoulders)
  - Experience, rules of thumb
  - Discipline: clearly defined end state, keep your eyes on the ball
  - **Abstraction and layering**

## Recap: Constant Change

---

